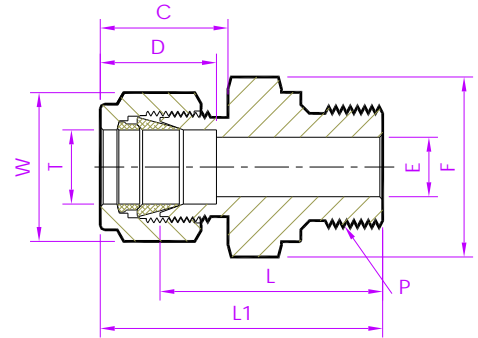


- Tube Fitting (Double Ferrule)-  
Tube To Male Pipe Thread

# Male Connector



Fractional Tube x ISO Parallel (M) - RSIP

Tubefit Part No.	Equivalent Part No. Type 1	Equivalent Part No. Type 2	TUBE OD Ø T	ISO Male Pipe Size P	ØE	D	C	L	L1	Hex F	Hex W
Dimensions in Inches											
2 - MCD - 2RSIP	- 200 - 1 - 2RS	2MSC2R	1/8	1/8	0.09	0.50	0.60	0.92	1.18	9/16	7/16
2 - MCD - 4RSIP	- 200 - 1 - 4RS	2MSC4R		1/4	0.09			1.13	1.39	3/4	
2 - MCD - 6RSIP	- 200 - 1 - 6RS	2MSC6R		3/8	0.09			1.17	1.43	7/8	
4 - MCD - 2RSIP	- 400 - 1 - 2RS	4MSC2R	1/4	1/8	0.16	0.60	0.70	0.98	1.27	9/16	9/16
4 - MCD - 4RSIP	- 400 - 1 - 4RS	4MSC4R		1/4	0.19			1.19	1.48	3/4	
4 - MCD - 6RSIP	- 400 - 1 - 6RS	4MSC6R		3/8	0.19			1.24	1.53	7/8	
4 - MCD - 8RSIP	- 400 - 1 - 8RS	4MSC8R		1/2	0.19			1.47	1.76	1.1/16	
6 - MCD - 2RSIP	- 600 - 1 - 2RS	6MSC2R	3/8	1/8	0.16	0.66	0.76	1.06	1.35	3/4	11/16
6 - MCD - 4RSIP	- 600 - 1 - 4RS	6MSC4R		1/4	0.23			1.25	1.54	3/4	
6 - MCD - 6RSIP	- 600 - 1 - 6RS	6MSC6R		3/8	0.28			1.30	1.59	7/8	
6 - MCD - 8RSIP	- 600 - 1 - 8RS	6MSC8R		1/2	0.28			1.53	1.82	1.1/16	
8 - MCD - 4RSIP	- 810 - 1 - 4RS	8MSC4R	1/2	1/4	0.23	0.90	0.86	1.28	1.68	13/16	7/8
8 - MCD - 6RSIP	- 810 - 1 - 6RS	8MSC6R		3/8	0.31			1.30	1.70	7/8	
8 - MCD - 8RSIP	- 810 - 1 - 8RS	8MSC8R		1/2	0.41			1.53	1.93	1.1/16	
12 - MCD - 8RSIP	- 1210 - 1 - 8RS	12MSC8R	3/4	1/2	0.47	0.96	0.86	1.53	1.93	1.1/16	1.1/8
12 - MCD - 12RSIP	- 1210 - 1 - 12RS	12MSC12R		3/4	0.62			1.68	2.08	1.5/16	
16 - MCD - 8RSIP	- 1610 - 1 - 8RS	16MSC8R	1	1/2	0.47	1.23	1.04	1.72	2.20	1.3/8	1.1/2
16 - MCD - 16RSIP	- 1610 - 1 - 16RS	16MSC16R		1	0.78			1.88	2.36	1.5/8	

- RSIP parallel threads ends are commonly used with a gasket having a bonded elastomer seal. RPGD type gasket may also be used (RSGD Fitting Gasket)

NOTE : 1)The E Dimension is the minimum opening & Fittings of this group may be back drilling to lager ID at pipe thread or straight thread end.  
2)Dimension L1, C, D is shown in the finger-tight position. 3)Dimensions are for reference only and are subject to change 4)ISO (BSP Parallel) thread as per BS 2779.  
**- ALL PART NUMBERS ARE PROPRIETARY OF THEIR RESPECTIVE OWNERS. -**